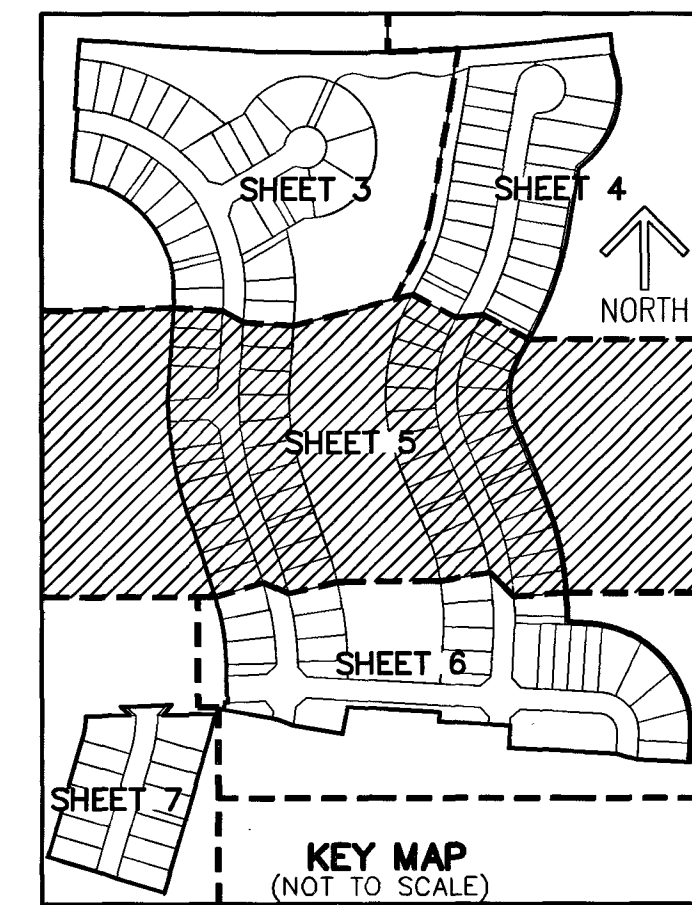


CRESSWIND PALM BEACH PHASE 4

BEING A REPLAT OF PORTION OF TRACT O.S.T. 21, CRESSWIND PALM BEACH PHASE 2, AS RECORDED IN PLAT BOOK 130, PAGES 199 THROUGH 205, OF THE PUBLIC RECORDS OF PALM BEACH COUNTY, FLORIDA, TOGETHER WITH A PORTION OF SECTION 6, TOWNSHIP 43 SOUTH, RANGE 41 EAST, CITY OF WESTLAKE, PALM BEACH COUNTY, FLORIDA.

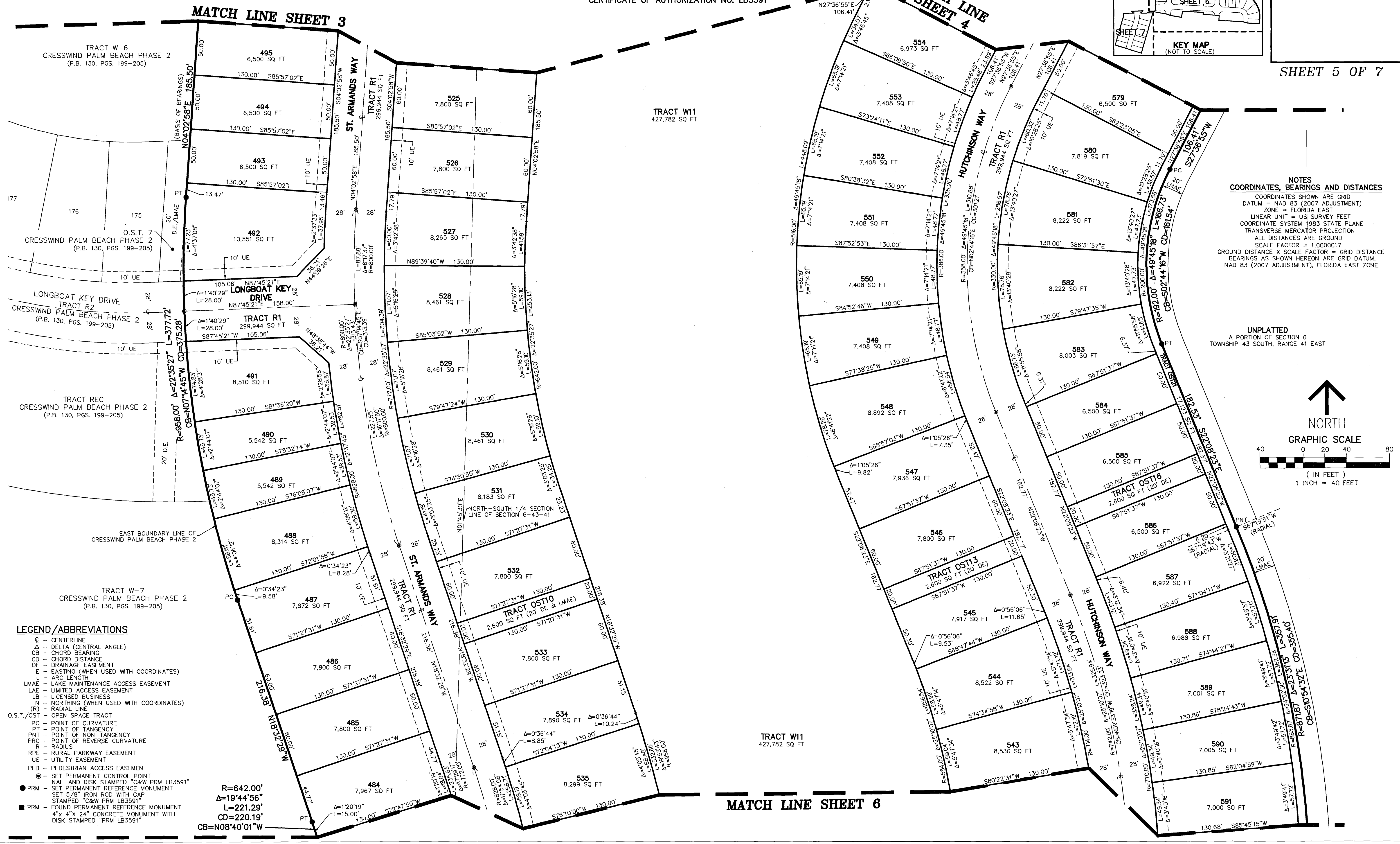
THIS INSTRUMENT PREPARED BY DAVID P. LINDLEY OF

CAULFIELD & WHEELER, INC.
SURVEYORS - ENGINEERS - PLANNERS
7900 GLADES ROAD, SUITE 100
BOCA RATON, FLORIDA 33434 - (561)392-1991
CERTIFICATE OF AUTHORIZATION NO. LB3591



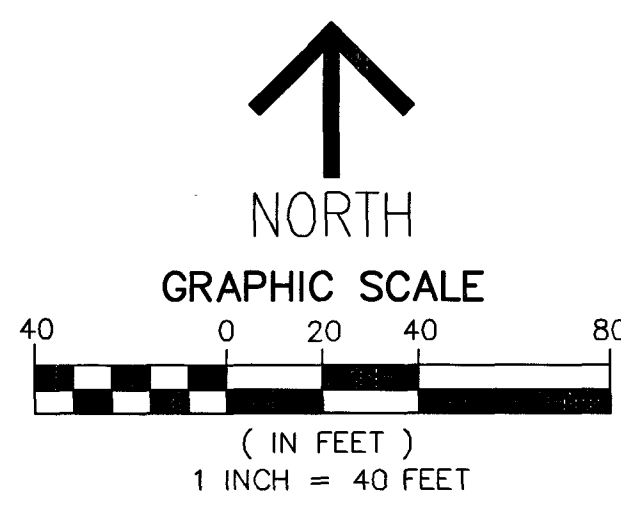
83

SHEET 5 OF 7



NOTES
COORDINATES, BEARINGS AND DISTANCES
COORDINATES SHOWN ARE GRID
DATUM = NAD 83 (2007 ADJUSTMENT)
ZONE = FLORIDA EAST
LINEAR UNIT = US SURVEY FEET
COORDINATE SYSTEM 1983 STATE PLANE
TRANSVERSE MERCATOR PROJECTION
ALL DISTANCES ARE GRID
SCALE FACTOR = 1.0000017
GROUND DISTANCE X SCALE FACTOR = GRID DISTANCE
BEARINGS AS SHOWN HEREON ARE GRID DATUM,
NAD 83 (2007 ADJUSTMENT), FLORIDA EAST ZONE.

UNPLATTED
A PORTION OF SECTION 6
TOWNSHIP 43 SOUTH, RANGE 41 EAST



- LEGEND/ABBREVIATIONS**
- ⊖ CENTERLINE
 - Δ DELTA (CENTRAL ANGLE)
 - CB CHORD BEARING
 - CD CHORD DISTANCE
 - DE DRAINAGE EASEMENT
 - E EASTING (WHEN USED WITH COORDINATES)
 - L ARC LENGTH
 - LMAE LAKE MAINTENANCE ACCESS EASEMENT
 - LAE LIMITED ACCESS EASEMENT
 - LB LICENSED BUSINESS
 - N NORTHING (WHEN USED WITH COORDINATES)
 - (R) RADIAL LINE
 - O.S.T./OST OPEN SPACE TRACT
 - PC POINT OF CURVATURE
 - PT POINT OF TANGENCY
 - PNT POINT OF NON-TANGENCY
 - PRC POINT OF REVERSE CURVATURE
 - R RADIUS
 - RPE RURAL PARKWAY EASEMENT
 - UE UTILITY EASEMENT
 - PED PEDESTRIAN ACCESS EASEMENT
 - ⊙ SET PERMANENT CONTROL POINT
NAIL AND DISK STAMPED "C&W PRM LB3591"
 - PRM SET PERMANENT REFERENCE MONUMENT
SET 5/8" IRON ROD WITH CAP
STAMPED "C&W PRM LB3591"
 - PRM FOUND PERMANENT REFERENCE MONUMENT
4" X 4" X 24" CONCRETE MONUMENT WITH
DISK STAMPED "PRM LB3591"

R=642.00'
Δ=19°44'56"
L=221.29'
CD=220.19'
CB=N08°40'01"W

MATCH LINE SHEET 6